

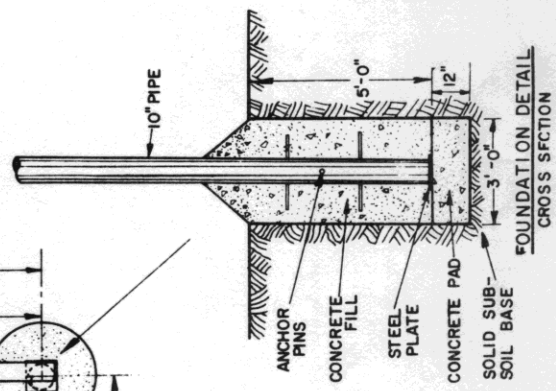
**PERSPECTIVE**  
 STORAGE BIN FOR SAWDUST FROM SAWMILL  
 DIRECT LOADING INTO LARGE DUMP TRUCKS  
 CLEARANCE 14', EXCEPT FOR HIGH CUBE  
 TRAILERS (13'-6" HIGH)—PROVIDE 16' CLEARANCE

**FINISH**

BIN CAN BE PAINTED, BUT IS BEST  
 LEFT UNFINISHED. PRESERVE WOOD BY  
 APPLICATIONS OF PENTACHLOROPHENOL (PENTA),  
 ESPECIALLY TO PROTECT END GRAIN OF  
 EXPOSED WOODEN PIECES.

3500 CU. FT.

**FOUNDATION PLAN**



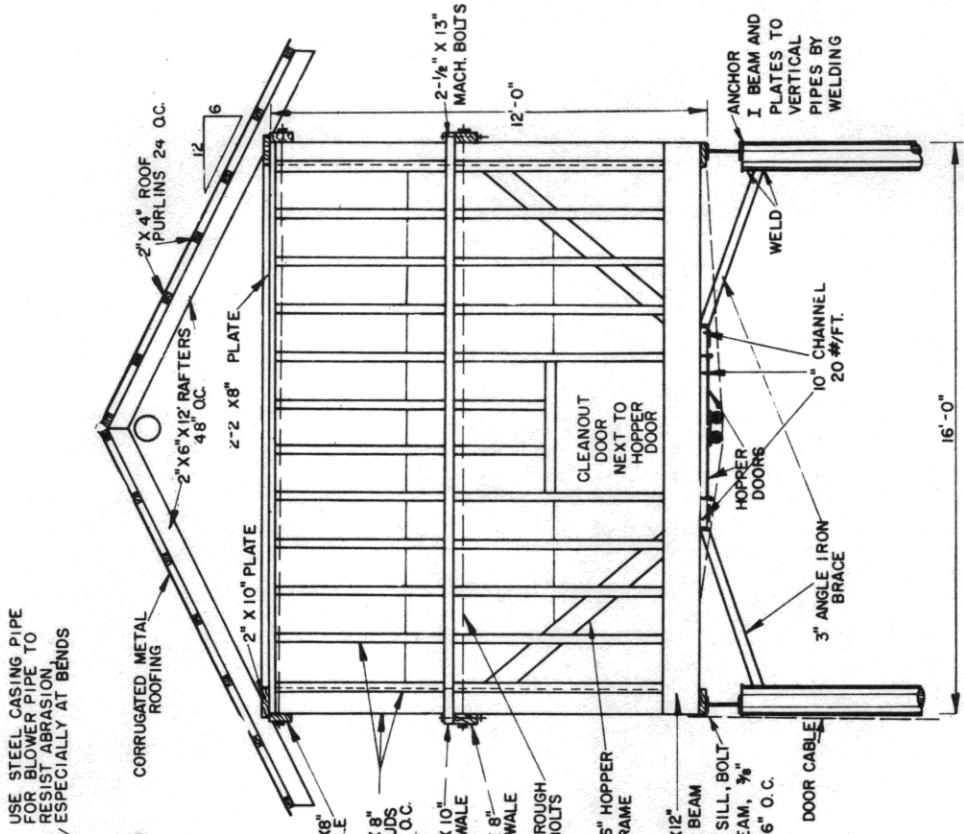
**FOUNDATION DETAIL  
 CROSS SECTION**

**NOTE:**  
 CONSULT LOCAL HEALTH AND BUILDING  
 CODE AUTHORITIES BEFORE STARTING  
 CONSTRUCTION.  
 EXTEND FOOTINGS TO FIRM BASE  
 BELOW FROST LINE

DESIGN FROM BIN BUILT  
 BY WADE COCHRAN,  
 MCKEAN COUNTY

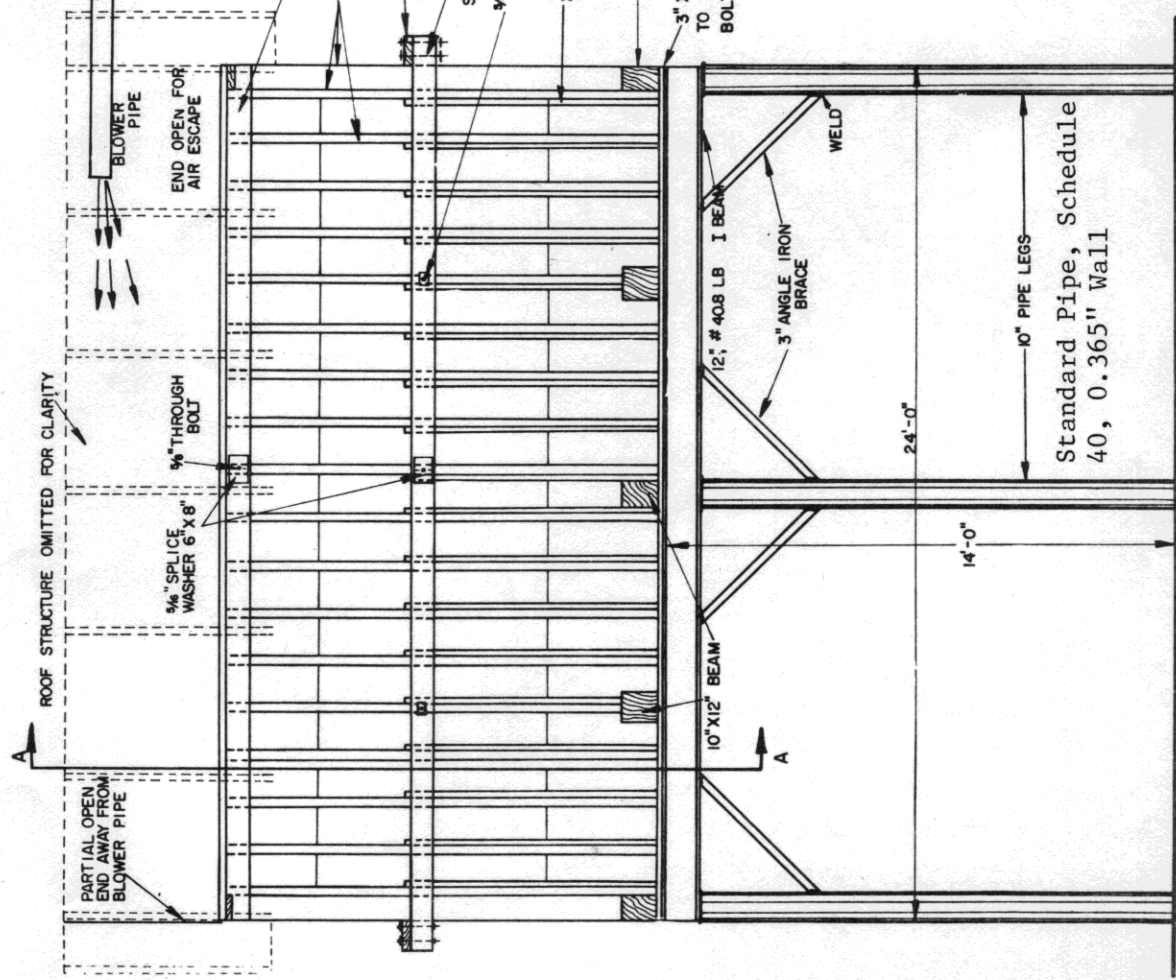
PLAN LAYOUT IN  
 CONSULTATION WITH  
 ROE S. COCHRAN

COOPERATIVE EXTENSION WORK IN AGRICULTURE AND HOME ECONOMICS	
UNITED STATES DEPARTMENT OF AGRICULTURE COOPERATING	
<b>ELEVATED SAWDUST BIN</b>	
PA '77	SHEET 1 OF 3
6276	



END VIEW

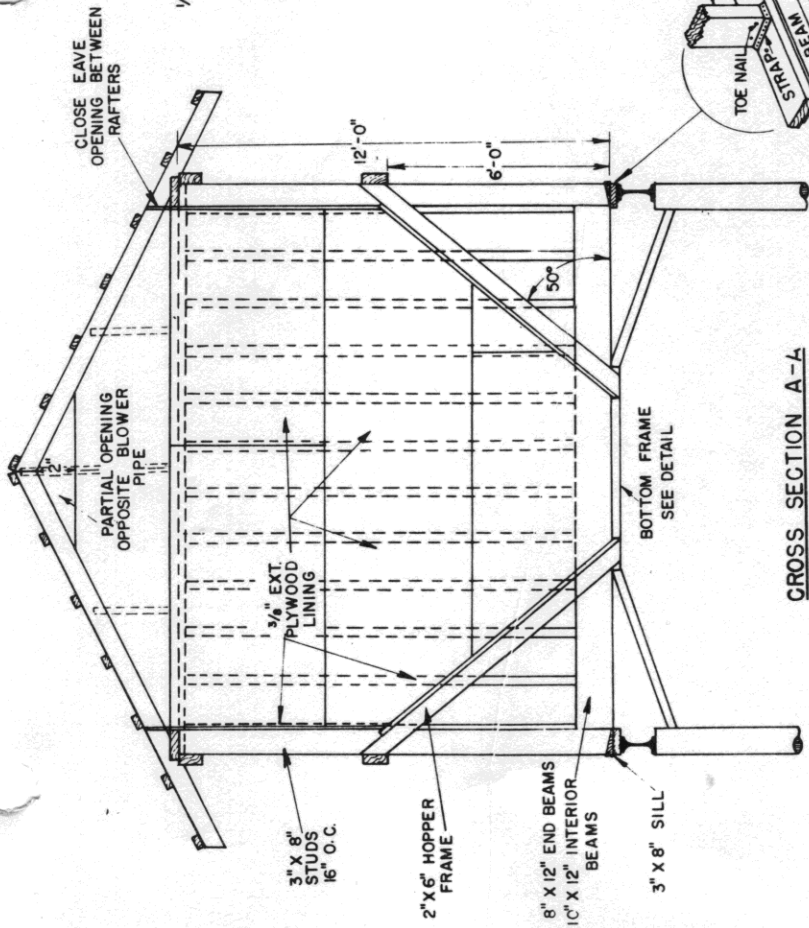
NOTE  
 FULL SIZED ROUGH LUMBER TO BE USED, OAK SUGGESTED.  
 BIN LINER - 5/8" EXT. PLYWOOD OR 1" LUMBER LINED WITH 28 GAUGE GALVANIZED STEEL.



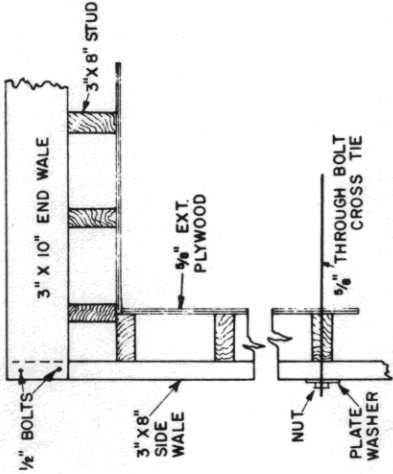
SIDE VIEW

Standard Pipe, Schedule 40, 0.365" Wall  
 10" PIPE LEGS

COOPERATIVE EXTENSION WORK IN AGRICULTURE AND HOME ECONOMICS	
UNITED STATES DEPARTMENT OF AGRICULTURE COOPERATING	
ELEVATED SAWDUST BIN	
PA '77	SHEET 2 OF 3

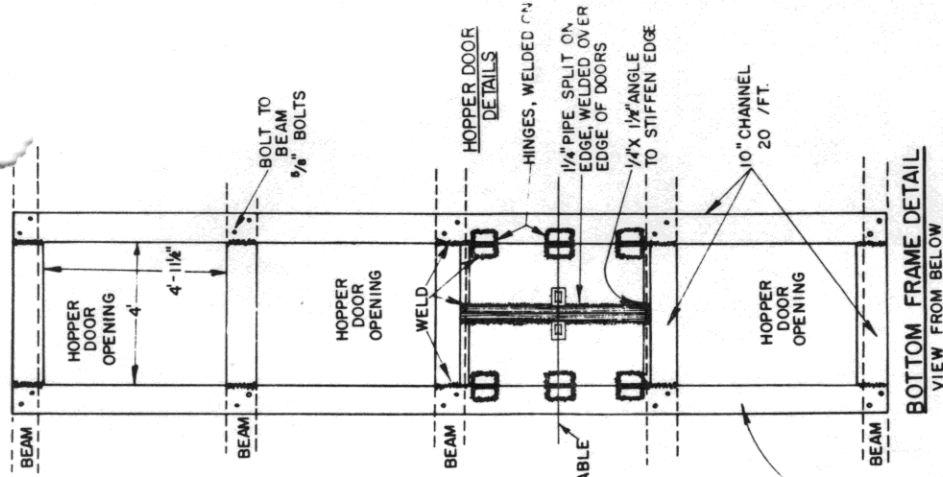
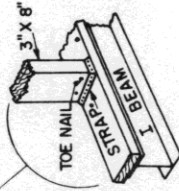


CROSS SECTION A-A



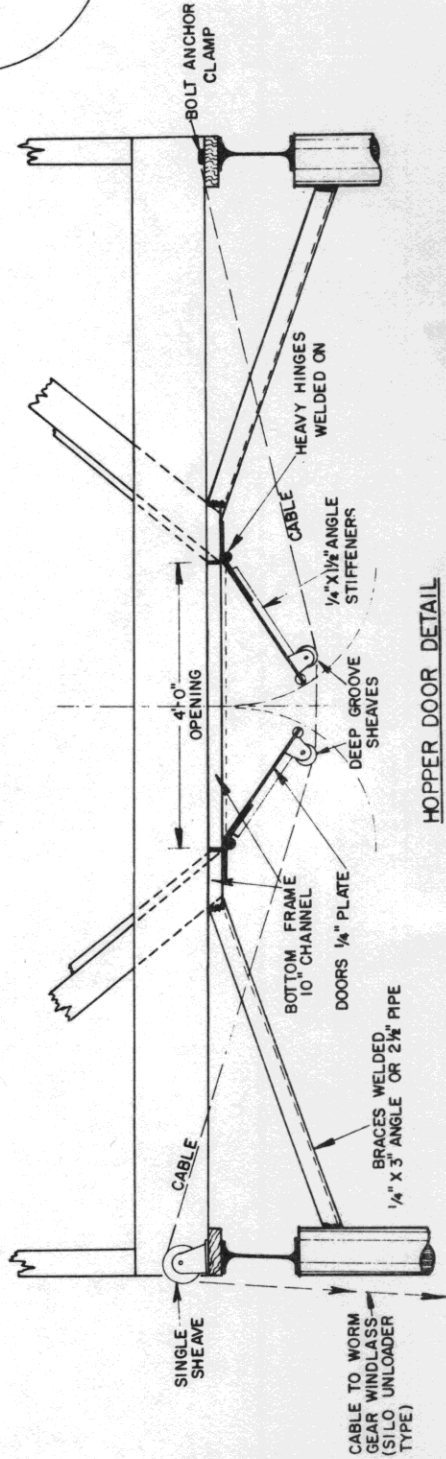
WALL & CORNER DETAIL

STUD DETAIL  
TOENAIL TO SILL,  
USE 24\"/>



BOTTOM FRAME DETAIL  
VIEW FROM BELOW

NOTE: FOUR HOPPER DOORS WORK BEST, BUT TWO CAN BE USED. IN HOPPER OPENINGS WITHOUT DOORS, USE A FLOOR OF 2\"/>



HOPPER DOOR DETAIL