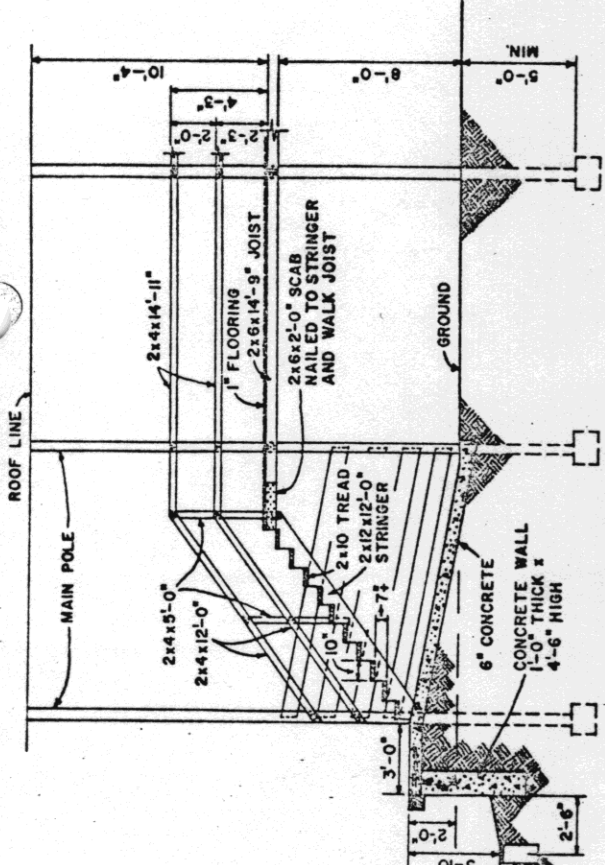


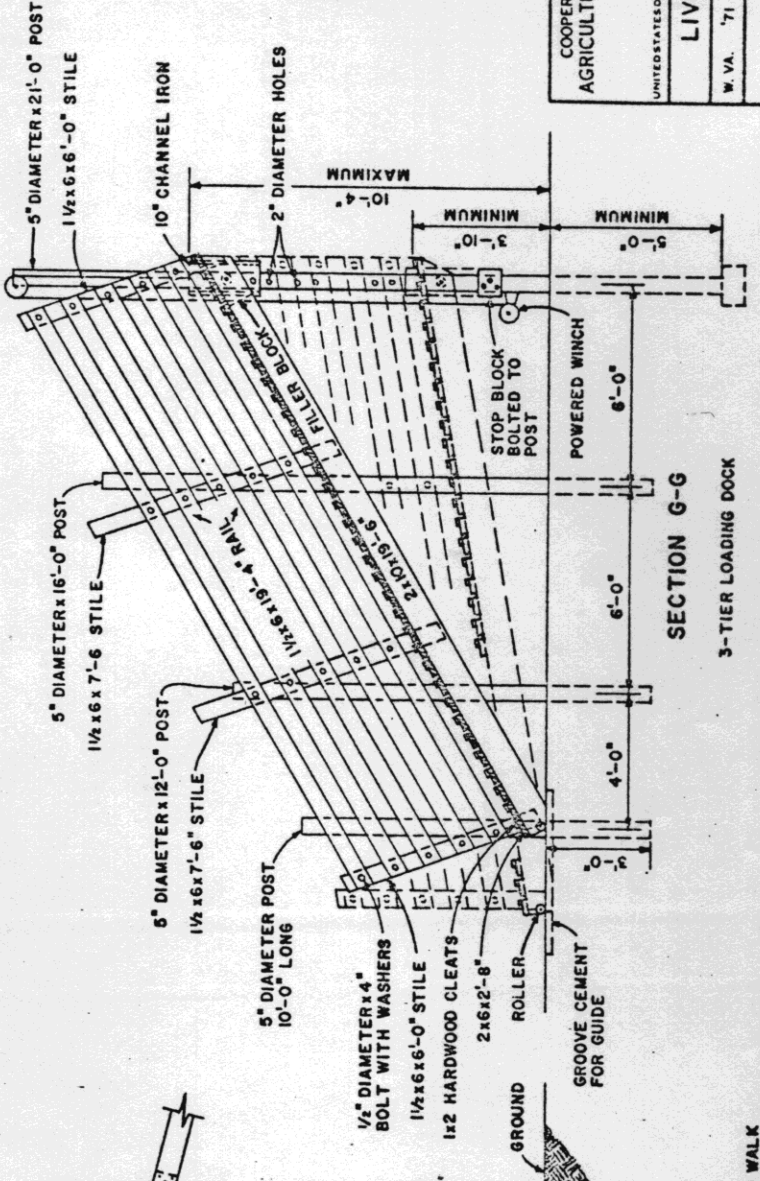
**SECTION E-E**  
OVERHEAD WALK



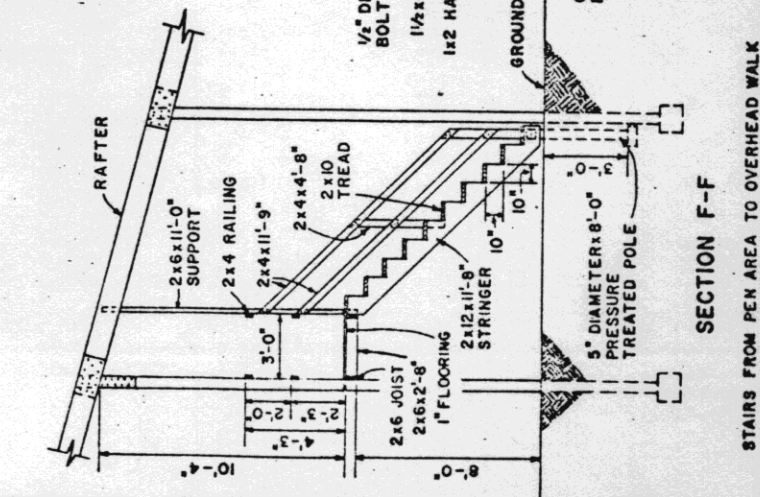
**SECTION D-D**  
STAIRS FROM DOCK TO OVERHEAD WALK

GROUND LEVEL  
MAXIMUM GRADE 3%

CONCRETE DRAIN  
WITH GRILL, 10" WIDE  
BOTTOM SLOPE  
4" PER 10'-0"  
SEE SHEET 2,  
END ELEVATION

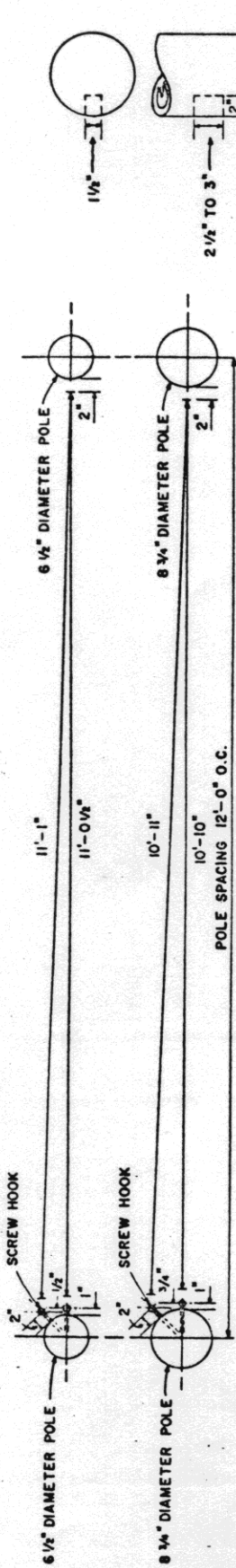


**SECTION G-G**  
3-TIER LOADING DOCK



**SECTION F-F**  
STAIRS FROM PEN AREA TO OVERHEAD WALK

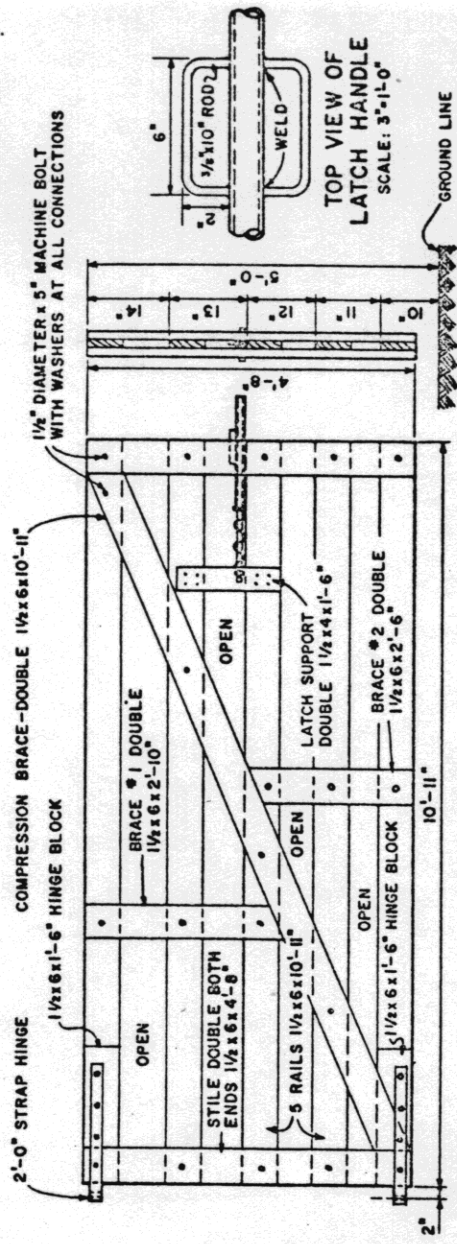




EFFECT OF POLE SIZE AND LOCATION OF GATE SCREW HOOKS ON GATE LENGTH VARIATION

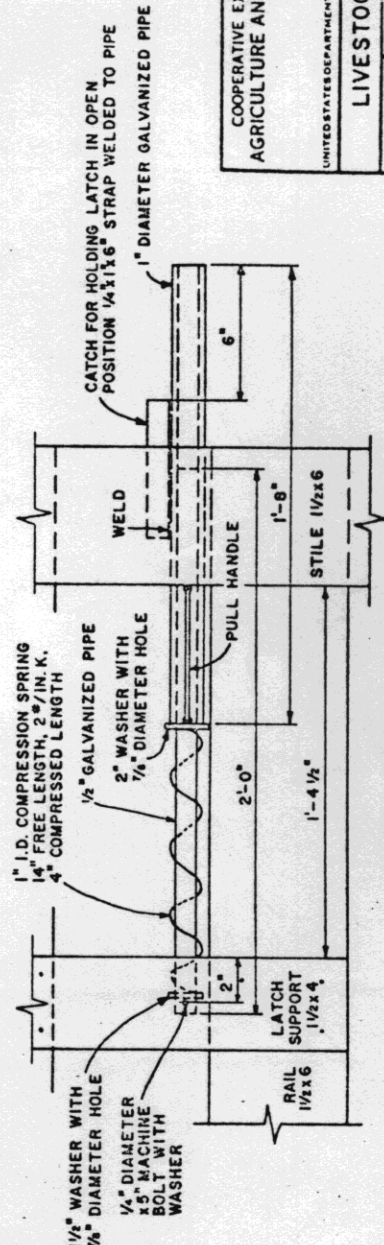
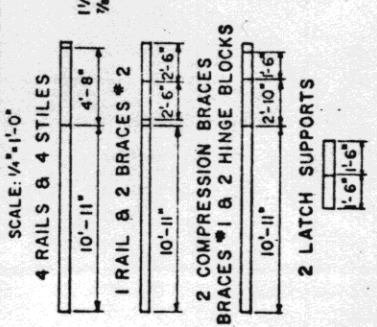
**BILL OF MATERIALS**

- LUMBER**  
 7 PIECES 1 1/2 x 6 x 16'-0"  
 1 PIECE 1 1/2 x 4 x 3'-0"
- HARDWARE**  
 18-1/4" DIAMETER x 5" MACHINE BOLTS WITH WASHERS  
 1 PAIR 2'-0" STRAP HINGE WITH BOLTS & SCREW HOOKS  
 1 PIECE 1/2" DIAMETER x 2'-0" GALVANIZED PIPE  
 1 PIECE 1" DIAMETER x 1'-8" GALVANIZED PIPE  
 1 PIECE 1/4" WASHER WITH 7/8" DIAMETER HOLE  
 1 PIECE 2" WASHER WITH 1/2" DIAMETER HOLE  
 1 PIECE 3/8" DIAMETER x 5" MACHINE BOLT WITH WASHER  
 2 PIECES 1/4" DIAMETER x 10" ROD, BENT FOR LATCH HANDLE  
 1 PIECE 1/4" x 1/6" STRAP IRON SPRING,  
 14" FREE LENGTH,  
 4" COMPRESSED LENGTH,  
 2" PER INCH K,  
 TOTAL FBM 86

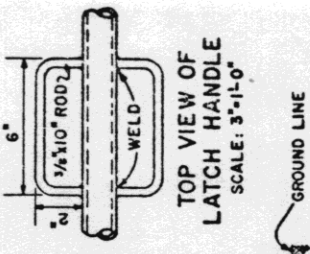


**GATE DETAIL**

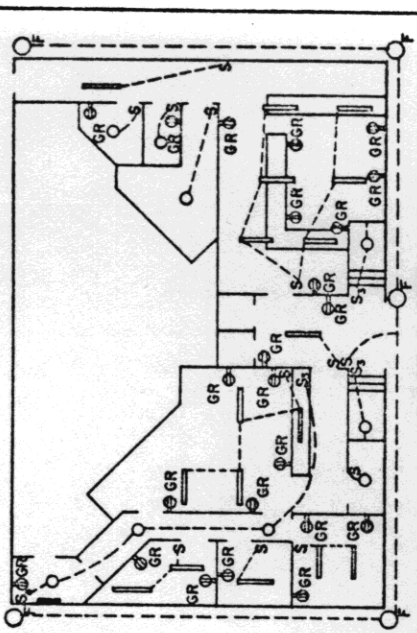
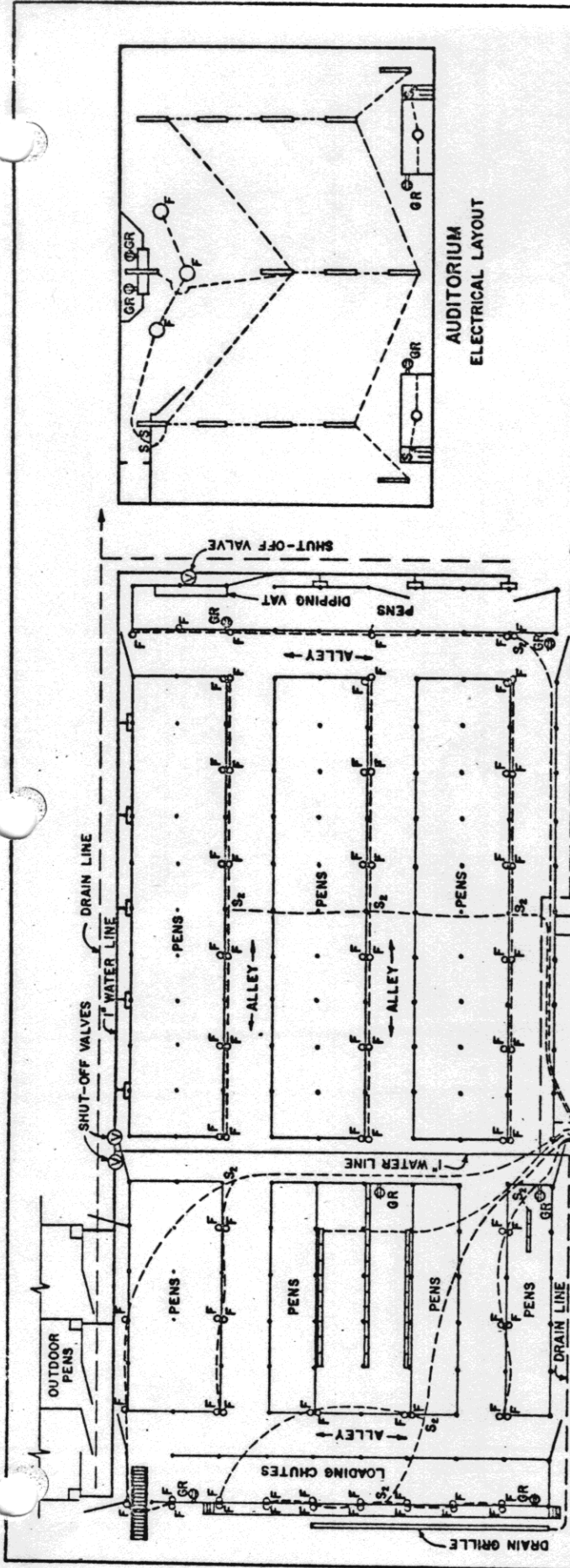
**LUMBER CUTTING SCHEDULE**



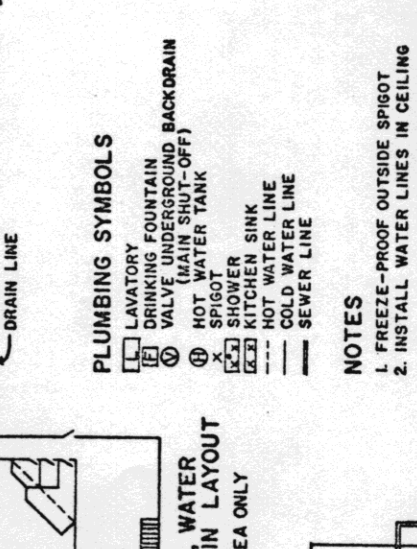
**LATCH DETAIL**



TOP VIEW OF LATCH HANDLE  
SCALE: 3'-11-0"



AUDITORIUM  
ELECTRICAL LAYOUT



FIRST FLOOR  
ELECTRICAL LAYOUT

PLUMBING SYMBOLS

- ⊞ LAVATORY
- ⊞ DRINKING FOUNTAIN
- ⊞ VALVE UNDERGROUND BACKDRAIN (MAIN SHUT-OFF)
- ⊞ HOT WATER TANK
- ⊞ SHOWER
- ⊞ KITCHEN SINK
- HOT WATER LINE
- COLD WATER LINE
- SEWER LINE

NOTES

1. FREEZE-PROOF OUTSIDE SPIGOT
2. INSTALL WATER LINES IN CEILING

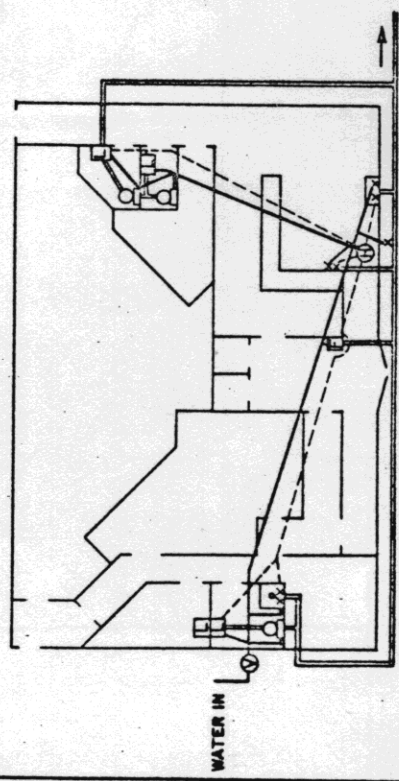
ELECTRICAL SYMBOLS

- REFLECTOR FLOOD LAMPS, 300 WATT
- INCANDESCENT LAMPS, 75 OR 100 WATT
- ⊞ GROUNDED TYPE CONVENIENCE OUTLET
- ⊞ FLUORESCENT LAMP, 2 BULBS, 40 WATT
- ⊞ FLUORESCENT LIGHTING OUTLET, 60 WATT, 3 ROWS, 9 LAMPS PER ROW
- S S.P.S.T. SWITCH
- S<sub>2</sub> D.P.S.T. SWITCH (FUSED 15 AMP.)
- S<sub>3</sub> THREE WAY SWITCH
- DISTRIBUTION PANEL (FUSE OR CIRCUIT BREAKER)

NOTES

1. OUTSIDE FLOOD LIGHTS TO BE MOUNTED UNDER EAVES
2. FLUORESCENT LAMPS TO BE MOUNTED FLUSH WITH CEILING.
3. RECOMMEND 400 AMP. SERVICE, THE A.C. LOAD DEMAND 200 AMP.

ELECTRICAL, WATER  
LINE AND DRAIN LAYOUT  
FOR PEN AREA ONLY



FIRST FLOOR  
WATER & SEWER LAYOUT