

Leadout Guide Position: (inboard and outboard wings)

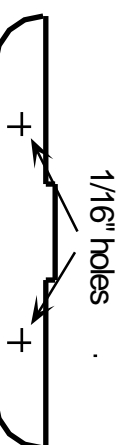
Tip Weight : use 2 pennies on outboard wing tip

Bellcrank Mount : 1/8" ply. Exact position is not critical. Glue in place after pushrod has been made to get exact neutral.

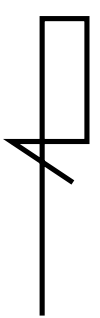
Bellcrank : Use Goldberg or Sig 1/2A (includes elevator horn)

Leadouts: use .025" music wire. Connect to bellcrank with Z-bend.

Wing: (top view) 1/8" balsa. Cut from 6" wide sheet or glue two 3" sheets together. Round leading and trailing edges. Do not airfoil.



Leadout Guide: 1/16" ply (make 2)



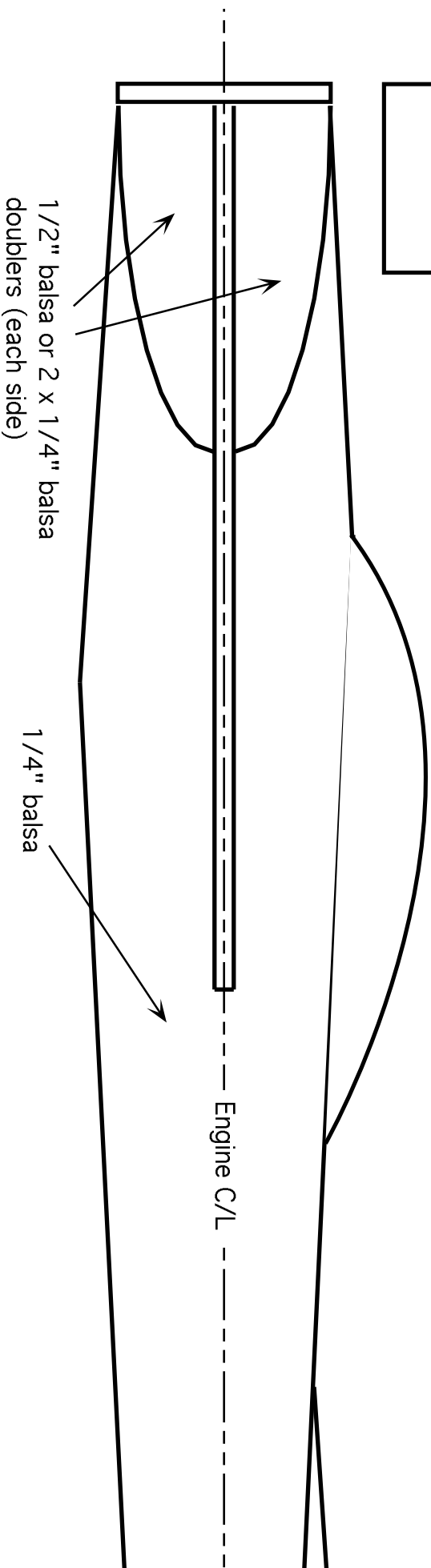
Leadout End Detail : Leadouts should be even in length with bellcrank centred and elevator in neutral position

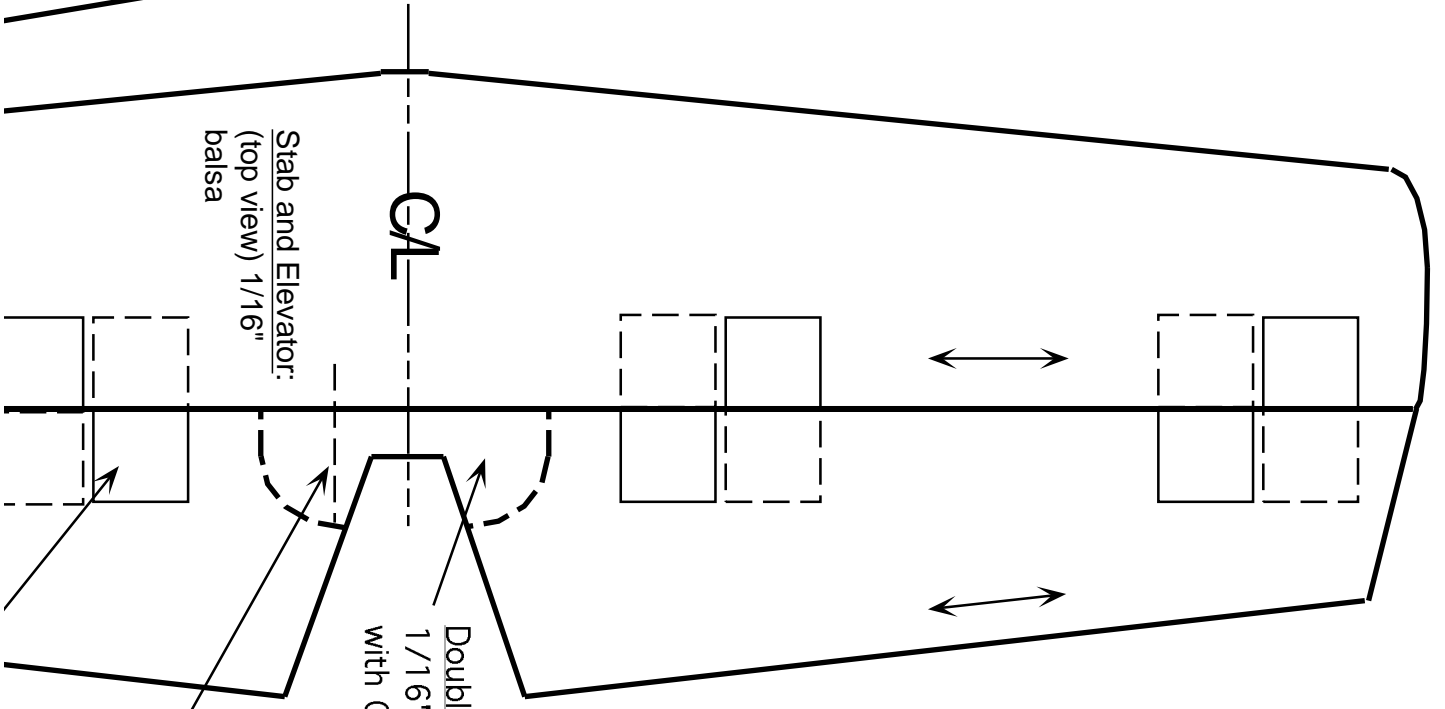
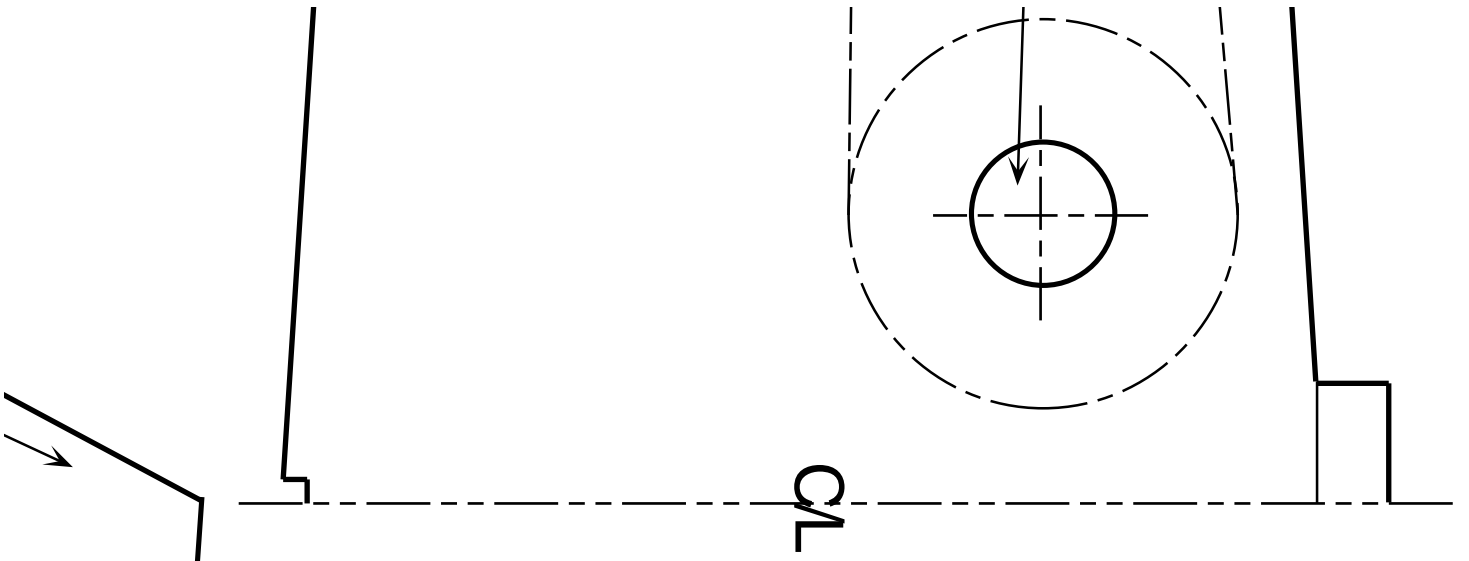
WARNING: Do not make sharp bends in wire

Pushrod : (Not shown) Make from 1/16" music wire approximately

Engine Mount
1/8" ply

10-3/4" long. Finished length should be 10". Use Z-bands at each end to connect to bellcrank and elevator horn.

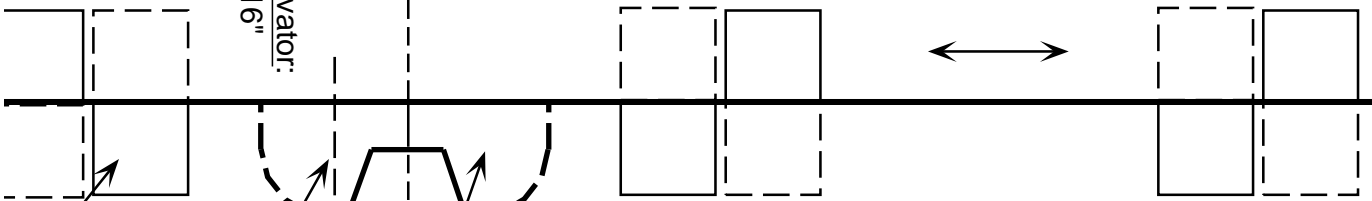


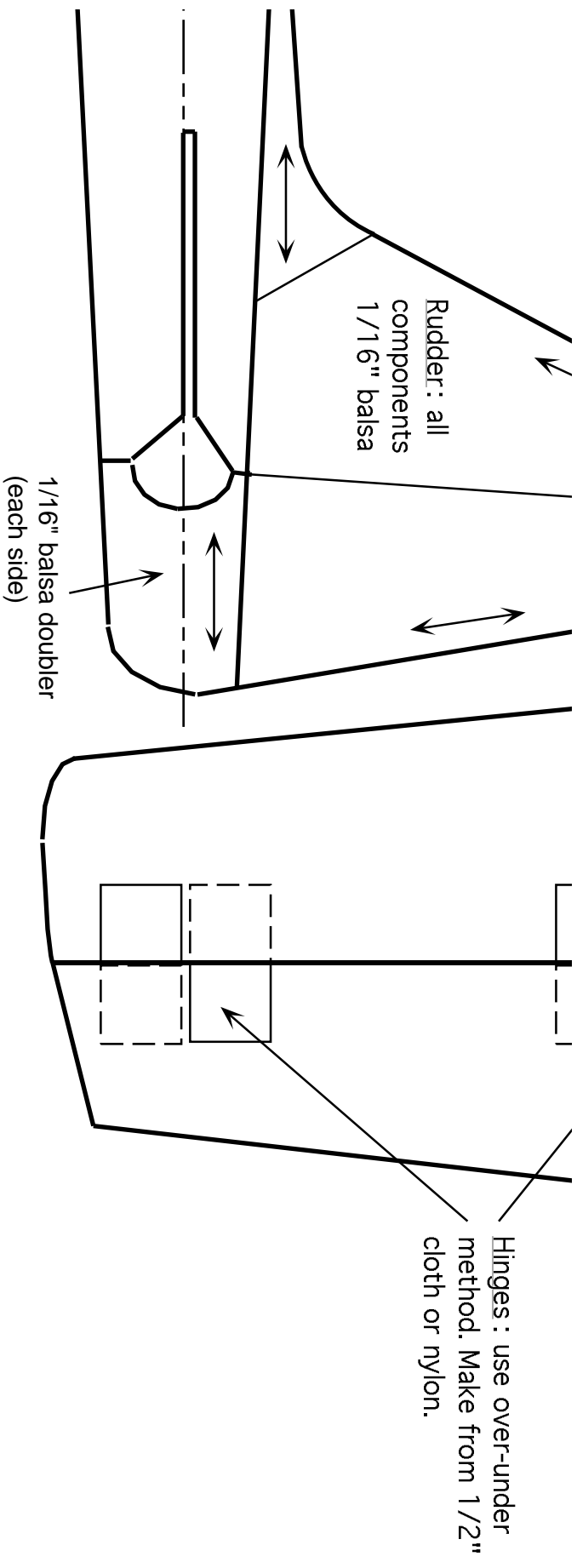


Stab and Elevator:
(top view) 1/16"
balsa

Doubler: 1/16" ply or
1/16" balsa soaked
with CyA

Control Horn : position
so holes are in line
with hinge line





Stunt Chimp Mk II

Drawn by Doug Carson - 96/12/03