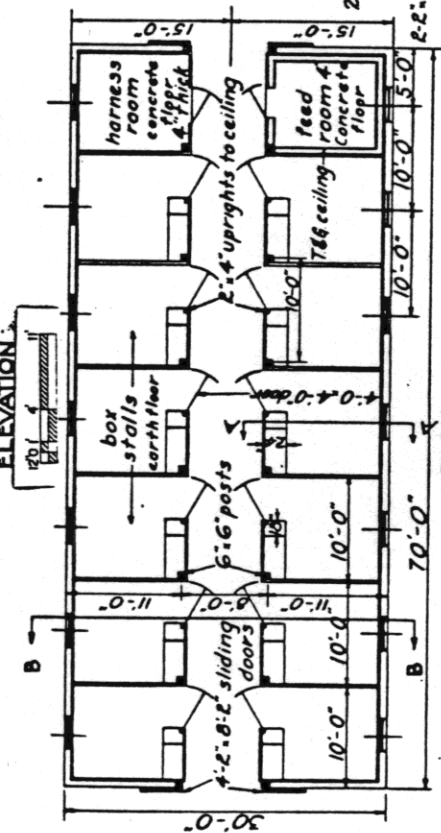
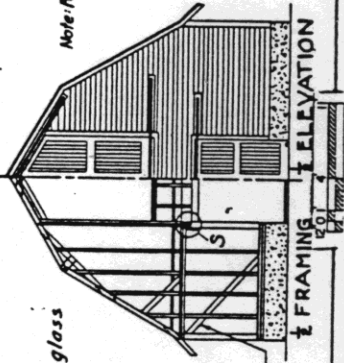


Note: for large horses increase size of stalls and use corner mangers



BILL OF MATERIALS

- Concrete: 25 cu. yds. 1:2 1/2:4 mix
- Cement: 150 bags
- sand: 14.5 cu. yds.
- stone: 21.0 cu. yds.
- Lumber:
 - girders: 42 pcs. 2" x 10" x 10'-0"
 - sills: 34 " 2" x 6" x 12'-0"
 - studs: 74 " 2" x 6" x 10'-0"
 - plates: 28 " 2" x 6" x 12'-0"
 - posts: 0 " 2" x 6" x 8'-0"
 - rafters: 16 " 2" x 6" x 12'-0"
 - lookouts: 24 " 2" x 6" x 12'-0"
 - corner bds.: 4 " 2" x 6" x 12'-0"
 - stall part.: 90 " 2" x 6" x 12'-0"
 - braces: 72 " 2" x 6" x 12'-0"
 - collars: 18 " 2" x 6" x 12'-0"
 - ties: 24 " 2" x 6" x 12'-0"
 - Joist: 72 " 2" x 6" x 12'-0"
 - ridgeboard: 6 " 2" x 10" x 12'-0"
- Cross bracing 1 420 lin. ft. 1 1/2"
- manger bds.: 640 bd. ft.
- guard bds.: 1120 bd. ft. 2.6"
- trim bds.: 285 lin. ft. 1.4"
- uprights: 12 pcs. 2.4" x 10'-0"
- manger braces: 15 " 2.4" x 12'-0"
- gates: 12 " 1.6" x 12'-0"
- flooring: 2630 sq. ft.
- siding: 14 single sash 6fts 10.12" glass
- windows: 4 - 4.2" x 8.2" sliding
- doors: 1 - 3.6" x 6'-0"
- " 1 - 3.0" x 6'-8"
- hay doors: 2 - 4.0" x 8'-0"
- sheathing: 4200 bd. ft.
- roofing: 40 sq. yds.
- anchor bolts: 24 " 8.6" x 10"
- iron dowels: 12 " 8.6"
- T. & G. ceiling: 600 sq. ft.
- Also nails, paint, hardware, etc.
- 1.6" notched in stud

420 lin. ft. 1 1/2"