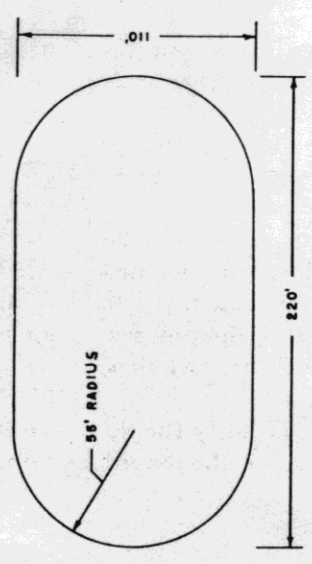


OUTDOORS



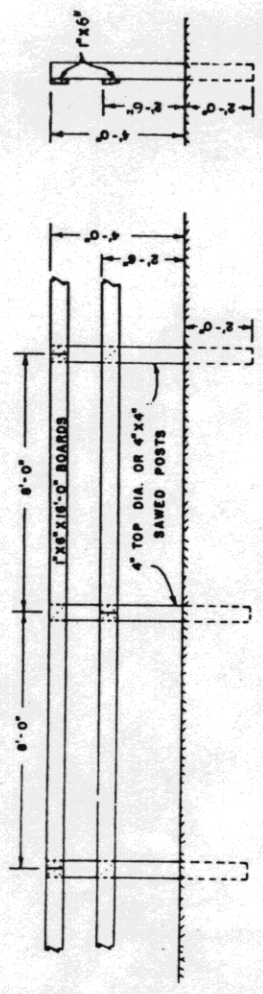
INDOORS

HORSE SHOW RINGS

SIZES RECOMMENDED BY THE NATIONAL HORSE SHOW ASSOCIATION

A large-scale drawing of the show rings may be obtained from the Extension agricultural engineer at your State university. There may be a small charge to cover cost of printing. If you do not know whom to contact in your State, send your request to Agricultural Engineer, Federal Extension Service, U.S. Department of Agriculture, Washington, D.C. 20250. He will forward your request to the correct university.

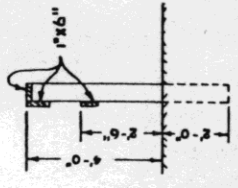
ORDER PLAN 6015, HORSE SHOW RINGS



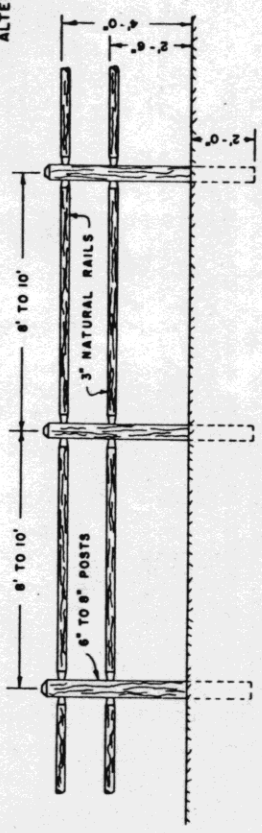
FRONT VIEW

SECTION

BOARD FENCE DETAIL



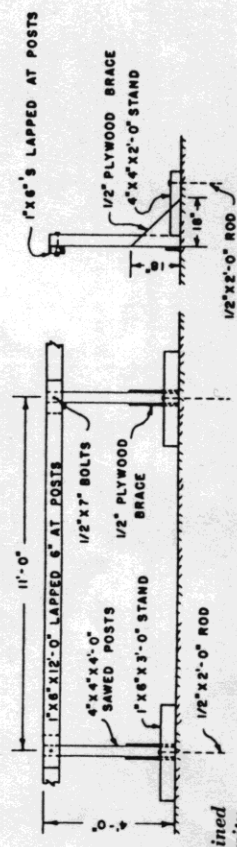
ALTERNATE SECTION



FRONT VIEW

SECTION

NATURAL RAIL FENCE DETAIL



FRONT VIEW

SECTION

MOVABLE FENCE DETAIL