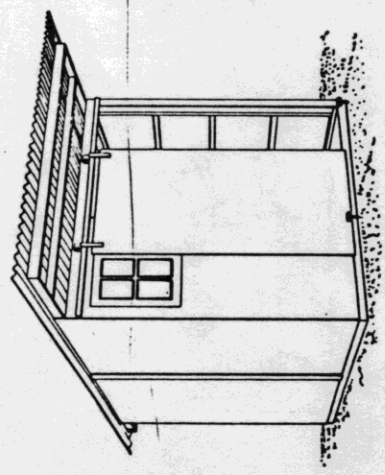
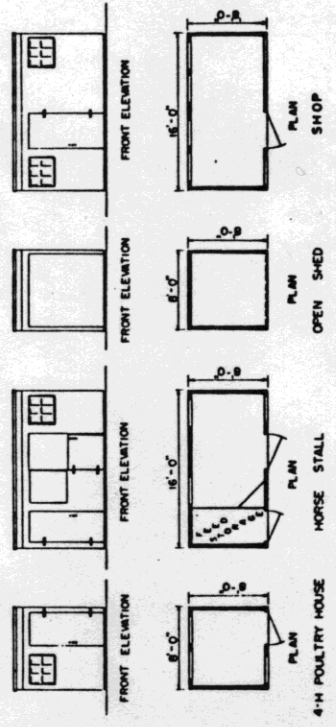


### USES OF UTILITY SHED

- I. GENERAL**  
 1 ALL JOINTS MAY BE CALKED TO PROVIDE A MORE WEATHER PROOF STRUCTURE.  
 2 DOORS MAY BE SLIDING OR SWING TYPE.  
 3 CONCRETE OR WOOD FLOOR SHOWN ON SHEET No. 2.
- II. TOOL SHED 8'-0" x 8'-0" (SHOWN ABOVE)**  
 III. 4-H-20 BIRD POULTRY HOUSE 8'-0" x 8'-0"  
 1 USE 2" INSULATION WITH VAPOR BARRIER IN WALLS & CEILING.  
 2 INTERIOR FINISH SHOULD BE DENSELY CLEANED MATERIAL.  
 3 PROVIDE SCREENS FOR DOORS & WINDOWS (IF MESH DESIRED)
- IV. HORSE STALL OR SHEEP PEN 8'-0" x 16'-0"**  
 1 STALL AREA INTERIOR, FINISHED WITH 1/2" PLYWOOD  
 2 PLANK FLOOR RECOMMENDED
- V. SHOP**

**NOTE**  
 BATTENS, RAFTER TRIM, SOFFITS, & FASCIA  
 TO BE CUT FROM 1 SHEET OF 1'-4"-0" x 8'-0"  
 EXTERIOR PLYWOOD & WASTE FROM THE  
 SIDING USED ON THE SIDE & REAR PANELS



PERSPECTIVE

### BILL OF MATERIALS

ITEM	PCS.	SIZE	AMOUNT
CONCRETE FLOOR	1	8'-0" x 8'-0" x 4"	1 CU YD
CONCRETE	14	3/4" x 16"	14 EA
ANCHOR BOLTS	9	2 x 4 x 16-0"	27 FBM
OPTIONAL WOOD FLOOR	2	2 x 6 x 16-0"	16 FBM
JOIST	5	4 x 6 x 16-0"	54 FBM
END JOIST & SKIDS	2	1/2" x 4'-0" x 16'-0"	2 SHEETS
FLOORING, EXTERIOR PLYWOOD	2	1/2" x 4'-0" x 16'-0"	2 EA
EYE BOLTS	164	1/2" x 16"	1 1/2 LBS.
NAILS, COMMON	64		3/4 LB.
2 REAR PANELS	4	2 x 4 x 16-0"	16 FBM
STUDS	10	2 x 4 x 16-0"	27 FBM
SILL, GIRTS, & PLATE	2	2 x 4 x 16-0"	32 FBM
SASH BLOCKING	2	2 x 4 x 16-0"	8 FBM
SIDING, EXTERIOR PLYWOOD	2	1/2" x 4'-0" x 16'-0"	2 SHEETS
BATTEN, EXTERIOR PLYWOOD	1	1" x 3" x 16'-0"	1 STRIP
WINDOW	1	1'-0" x 3'-0"	1 EA
NAILS, COMMON	164		1 1/2 LBS.
NAILS, GALVANIZED	64		3/4 LB.
4 SIDE PANELS	10	2 x 4 x 16-0"	27 FBM
GIRTS & SILL	2	2 x 4 x 16-0"	32 FBM
FRONT & CENTER STUDS	2	2 x 4 x 16-0"	8 FBM
REAR STUDS	4	1/2" x 4'-0" x 16'-0"	4 SHEETS
SIDING, EXTERIOR PLYWOOD	2	1/2" x 4'-0" x 16'-0"	2 SHEETS
BATTENS, EXTERIOR PLYWOOD	2	1" x 3" x 16'-0"	2 STRIPS
RAFTER TRIM, FRONT	2	1" x 4" x 16"	2 STRIPS
RAFTER TRIM, REAR	2	1" x 4" x 16"	2 STRIPS
RAILS, GALVANIZED	164		2 1/2 LBS.
NAILS, COMMON	64		3/4 LBS.
1 FRONT PANEL	3	2 x 4 x 16-0"	16 FBM
STUDS	5	2 x 4 x 16-0"	14 FBM
SILL, GIRTS, & PLATE	1	2 x 4 x 16-0"	4 FBM
HEADER	1	2 x 4 x 16-0"	3 FBM
SASH BLOCKING	1	2 x 4 x 16-0"	1 SHEET
SIDING, EXTERIOR PLYWOOD	1	1/2" x 4'-0" x 16'-0"	1 EA
WINDOW	1	2'-5" x 3'-0"	1 EA
NAILS, COMMON	164		1 LB.
NAILS, GALVANIZED	64		3/4 LB.
1 FRONT PANEL - SLIDING DOOR	3	2 x 4 x 16-0"	16 FBM
STUDS	1	2 x 4 x 16-0"	3 FBM
PLATE	1	2 x 4 x 16-0"	4 FBM
HEADER	1	1" x 2" x 17'-5"	1 STRIP
SIDING, EXTERIOR PLYWOOD	1	1/2" x 4'-0" x 16'-0"	1 STRIP
DOOR, EXTERIOR PLYWOOD	1	1" x 7" x 14'-0"	1 STRIP
SLIDING DOOR TRACK	1	1/2" x 4'-0" x 16'-0"	1 SHEET
SLIDING DOOR TROLLEYS	2	8'-0" LONG	2 EA
DOOR STAY ROLLERS	2	3" DIA WHEEL	2 EA
NAILS, COMMON	164		2 EA
NAILS, GALVANIZED	64		3/4 LB.
2 ROOF PANELS	4	2 x 4 x 12'-0"	32 FBM
RAFTERS	14	2 x 4 x 16-0"	36 FBM
GIRTS	1	1/2" x 4'-0" x 16'-0"	1 SHEET
FASCIA, FRONT	1	1/2" x 4'-0" x 16'-0"	1 EA
FASCIA, REAR	1	1/2" x 4'-0" x 16'-0"	1 EA
SOFFIT, FRONT	1	1/2" x 4'-0" x 16'-0"	1 EA
SOFFIT, REAR	1	1/2" x 4'-0" x 16'-0"	1 EA
NAILS, COMMON	164		1 1/2 LBS.
NAILS, GALVANIZED	64		3/4 LB.
2 SCREW SHANK	100		100 EA
BY CRIMP	2		2 SHEETS
ROOFING, ALUMINUM	4	.024" x 30" x 12'-0"	4 EA
FRAMING ANCHORS (AK)	4	18 GAUGE	4 EA
FRAMING ANCHORS (AL)	4	18 GAUGE	4 EA

UNIV. OF CONN. PLAN No. 302  
 COOPERATIVE EXTENSION WORK IN  
 AGRICULTURE AND HOME ECONOMICS  
 STATE OF NORTH DAKOTA  
 NORTH DAKOTA STATE UNIVERSITY  
 DEPARTMENT OF AGRICULTURE AND  
 HORTICULTURE

UTILITY SHED  
 CONN. '70 6100 SHEET 1 OF 2

